

# AUTOMATIONS FOR **SLIDING GATES**

up to 2000 kg

BULL20M supplied with control unit and integrated receiver  
BULL20T without control panel



Functional design. Shape to convey all the strength and reliability of the motor



Sturdy key-operated personalized unlocking system



Self-ventilated versions



LEGEND ON PAGE 11

# BULL20M BULL20T

## INDUSTRIAL USE

### SINGLE-PHASE

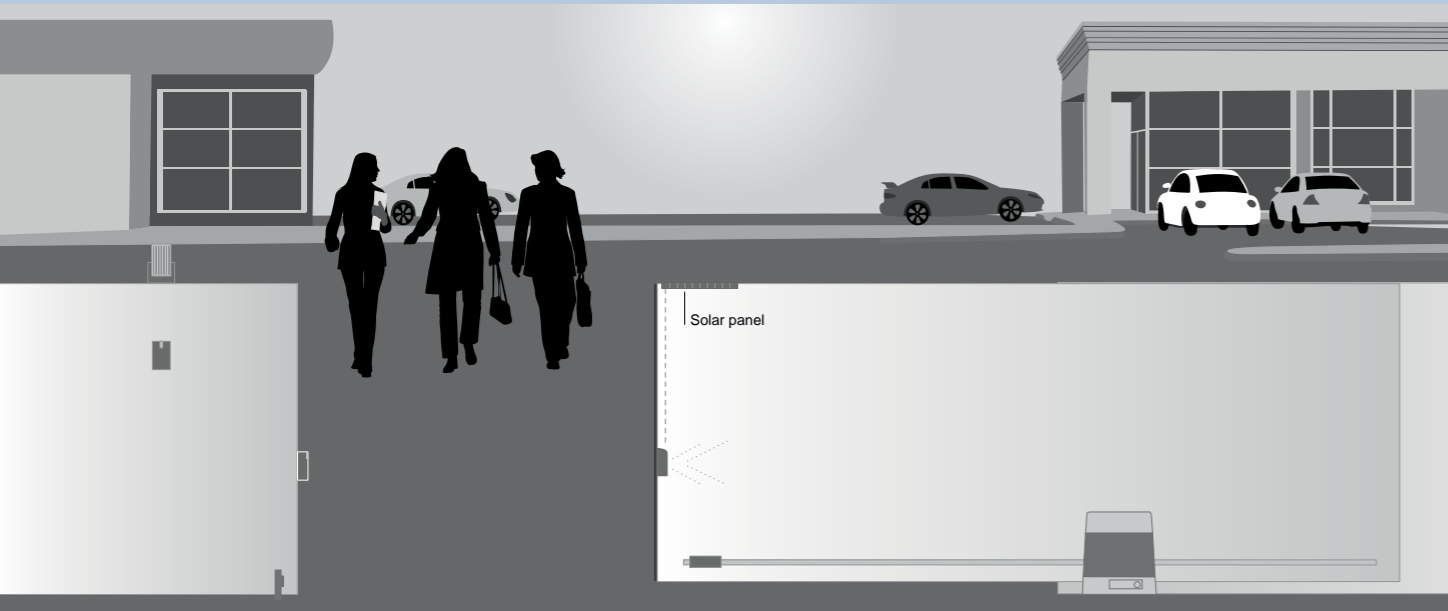
- 230 Vac single-phase operator with built-in control panel and receiver
- Self-ventilated version equipped with encoder
- Control unit with electronic braking
  - Available in versions with magnetic limit switches (BULL20M.S)

### THREE-PHASE

- Self-ventilated operator with external control unit
  - Operator equipped with electric brake
- Anti-crushing electronic brake
  - Available in versions with magnetic limit switches (BULL20T.S)



Equipped with  
foundation plate



TECHNICAL DATA	BULL20M	BULL20M.S	BULL20T	BULL20T.S
Power supply	230 Vac	230 Vac	400 Vac	400 Vac
Motor supply	230 Vac	230 Vac	400 Vac	400 Vac
Max. absorbed current	2,9 A	2,9 A	1,7 A	1,7 A
Thrust	1667 N	1667 N	2000 N	2000 N
Opening speed	10,5 m/min	10,5 m/min	10,5 m/min	10,5 m/min
Operation cycle	40%	40%	intensive use	intensive use
Protection level	IP 44	IP 44	IP 44	IP 44
Operating temp.	-20°C /+50°C	-20°C /+50°C	-20°C /+50°C	-20°C /+50°C
Max gate weight	2000 kg	2000 kg	2000 kg	2000 kg
Driving gear for rack	M4 Z18	M4 Z18	M4 Z18	M4 Z18
Magnetic limit switches	No	Yes	No	Yes
Weight	21,6 kg	21,6 kg	21,6 kg	21,6 kg
<b>Items no. per pallet</b>	<b>20</b>	<b>20</b>	<b>20</b>	<b>20</b>

**RI.M4Z**



M4 galvanized rack (22x22x2000 mm)  
**Packaging: 2 pcs**

**RI.M4F**



M4 galvanized rack with slots and screws (30x12x1000 mm)  
**Packaging: 4 pcs**

**RI.M6Z**



M6 galvanized rack (30x30x2000 mm) (needs the RI.P6 accessory to work)

**RI.P6**



M6 gear, It needs the rack RI.M6Z

**BULL.PI**



Raised foundation plate included 280 x 170, n.4 Ø 11 floor brackets, 269 x 106 n.4 M10 screws for motor

**ID.TA**



Aluminium warning board Available in different languages

**THINK**

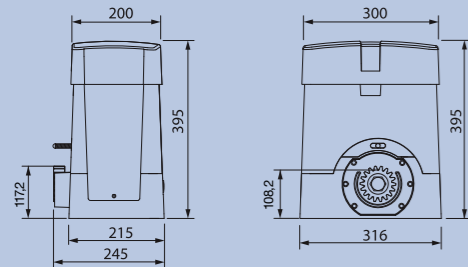


Control panel suitable for one 230Vac single phase operator up to 1500W or 400Vac 3-phases operator up to 2.200W. Built-in display for programming the functions. It is prepared with a plug-in connection for radio receiver. Technical features on page 158

**RF.SUN**



868 Mhz radiofrequency device comprising: 1 battery-operated device recharged by means of a photovoltaic panel applied on a mobile edge, with input for connection to an 8K2 sensitive edge or to a mechanical door switch. **Technical features on page 214**



**SAFETY DEVICES on page 214**

**SETS AVAILABLE**

KBULL20M 20 sets per pallet

KBULL20M.S 20 sets per pallet

pag. 218