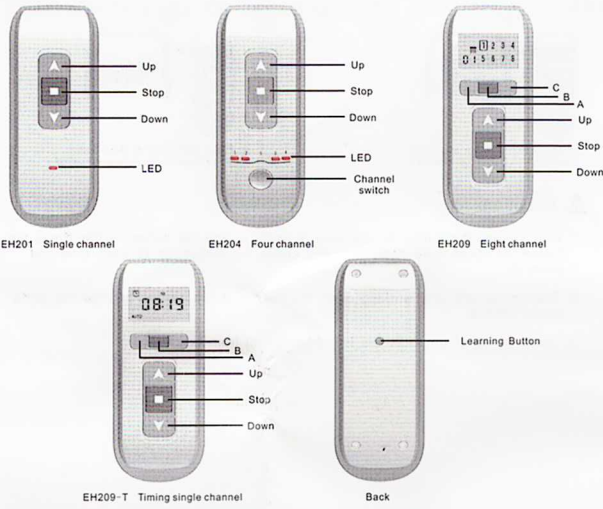


I. Product Appearance



II. Technical Data

Operating voltage: 3V Battery type:CR2430
Protection Index: Ip30 Working Current: ≤10mA
Permissible ambient temperature: -20℃ ~ +60℃ Code: Rolling code
Radio Frequency: 433.92MHz

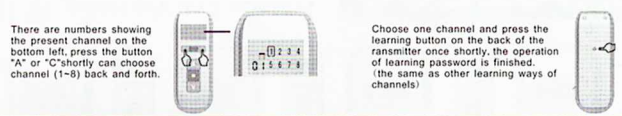
III. Password Learning

1. Single Channel
Press the learning button on the back of the transmitter once shortly, the operation of learning password is finished.



<1>

3. LED transmitter



IV. Single Control Setting

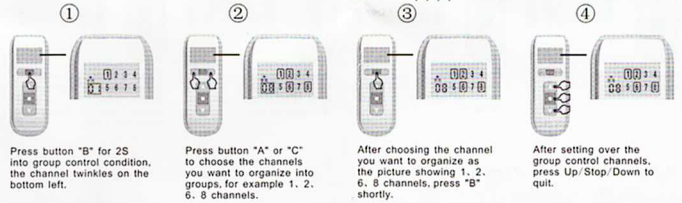
Choose channels at random through button "A" or "B", press the Up/Stop/Down button shortly can control the function of the present tubular motor.

V. The Group Control Setting

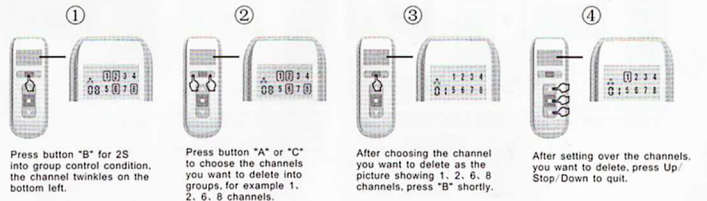


VI. The Group Control Setting (LED transmitter)

Press the button "B" shortly can switch single and group control.



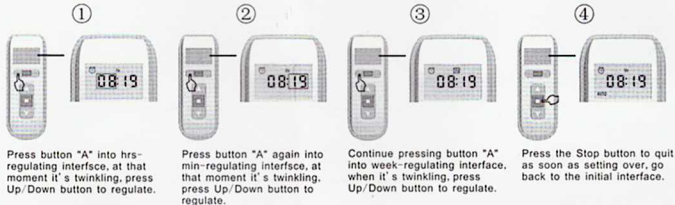
VII. Delete Group Control



<2>

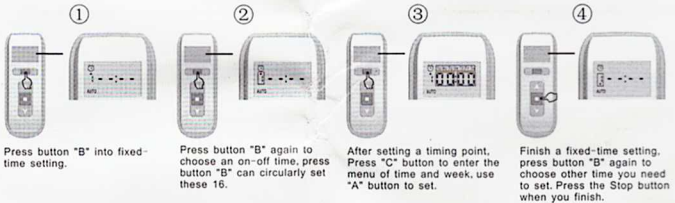
VIII. Timed Liquid Crystal Emitter (Single Channel)

1. Time Setting

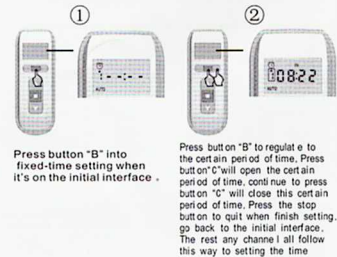


2. Fixed-Time Setting

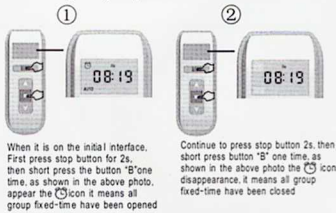
Press button "B" into fixed-time setting when it's on the initial interface, then it'll show you the alarm clock sign. You can set 8 group (16) 1-8 Open/Close time, press button "B" can circularly set these 16 fixed-time.



3. Setting certain period of time



4. Setting all group fixed-time



<3>

5. The Function of Stopwatch



Attention

- Don't press the button for too long in order to add the battery's life. Press the button for about 0.5S each time, and space the button for 1S each time you press it.
- The emitter will stop working when the battery is low, please change the same model battery.
- These series of products are forbidden to fall from upper air.

<4>